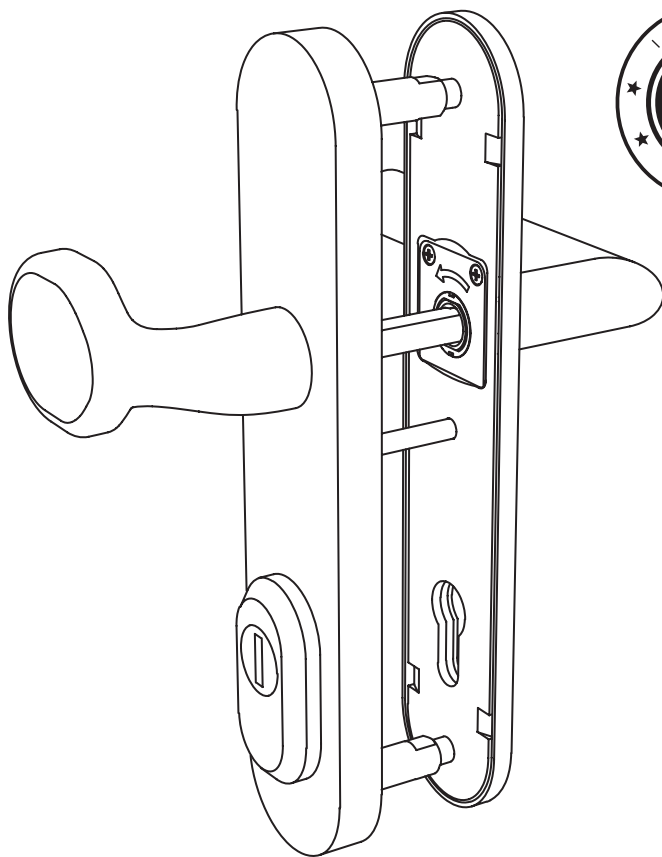


MPK®

handles & accessories

SECURO



2025/A/V1

INSTALLATION MANUAL

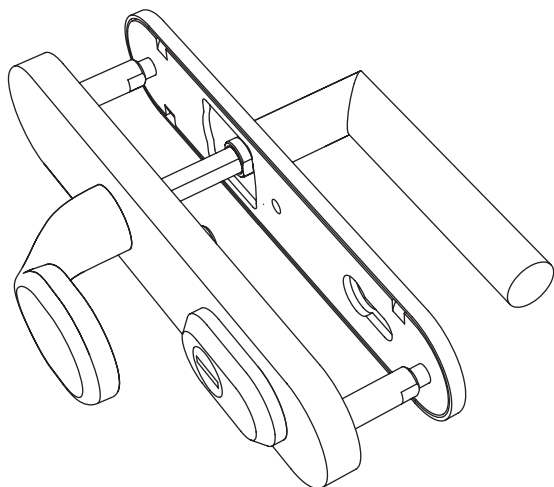
FOR SECURITY FITTINGS

SECURO	S01	PLUS	SO
SECURO	S02	PLUS	SH
SECURO	S03	PLUS	SL

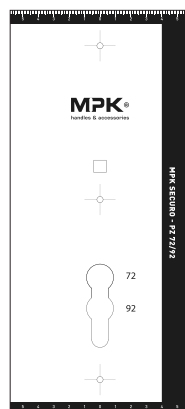
manufacturer MP KOVANIA s.r.o.

PACKAGE CONTENT

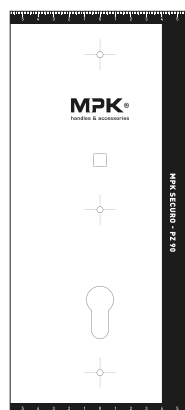
FITTING IN TRANSPORT POSITION



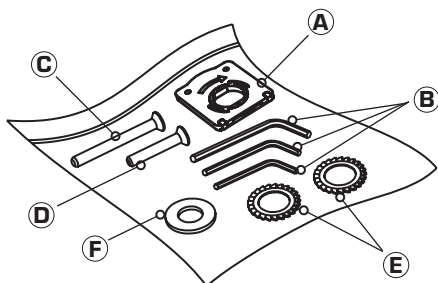
DRILLING TEMPLATE FOR PZ 72 AND 92



DRILLING TEMPLATE FOR PZ 90



BAG WITH COMPONENTS



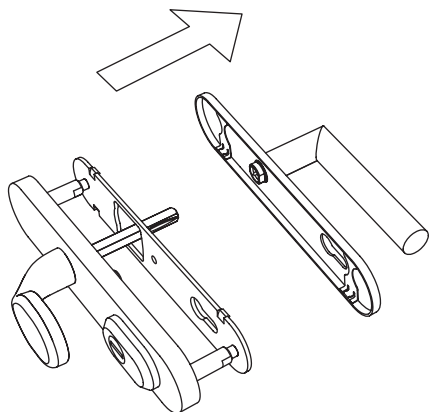
The fittings are supplied as standard for a door thickness of 40–55 mm.
Your package contents may vary depending on the door thickness specified
in your order.

CONTENTS OF THE BAG WITH COMPONENTS

- A** Lever handle return mechanism
- B** 3× Allen key
- C** Center screw M6 × 60 for door thickness 55 mm
- D** Center screw M6 × 50 for door thickness 40 mm
- E** Lock washers
- F** Galvanized steel washer

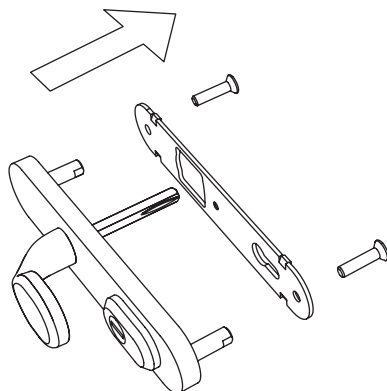
PREPARING THE FITTING FOR INSTALLATION

1



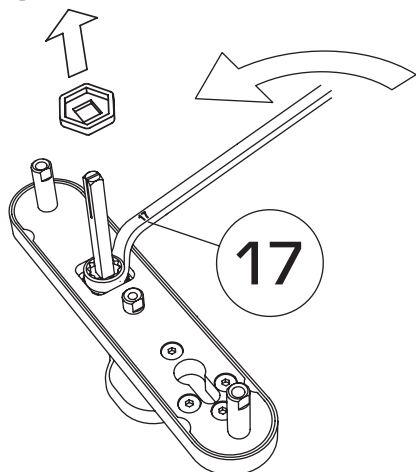
Detach the inner plate with the handle from the steel mounting base.

2



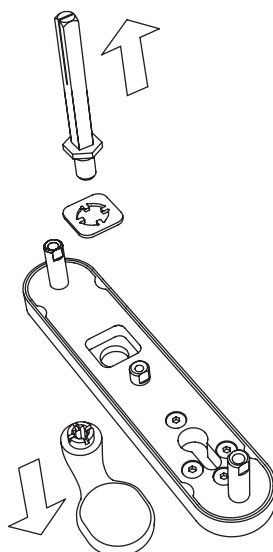
Remove the screws holding the steel mounting base.

3



Remove the adapter and loosen the nut with the rotating spindle using a 17 mm ring spanner.

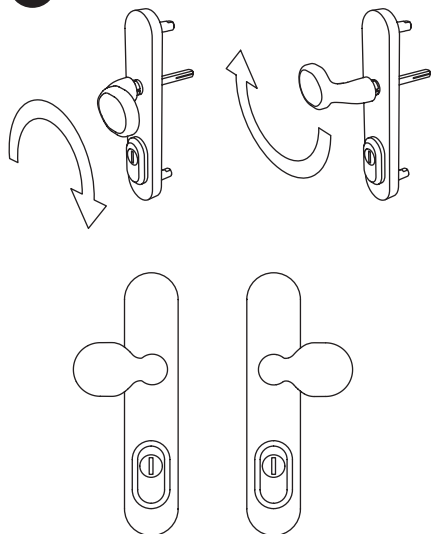
4



Unscrew the nut with the spindle and remove the pull handle from the transport position.

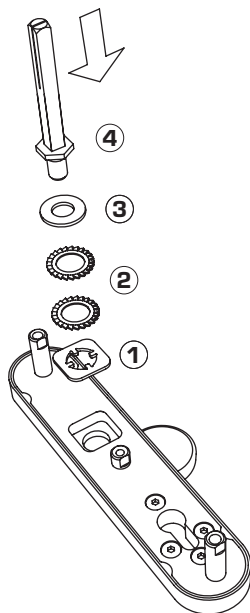
PREPARING THE FITTING FOR INSTALLATION

5



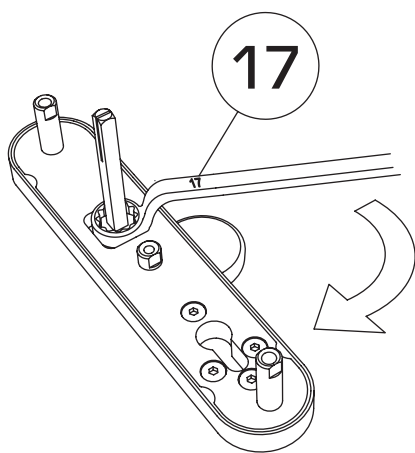
Align the pull handle according to the door orientation and insert it back into the opening.

6



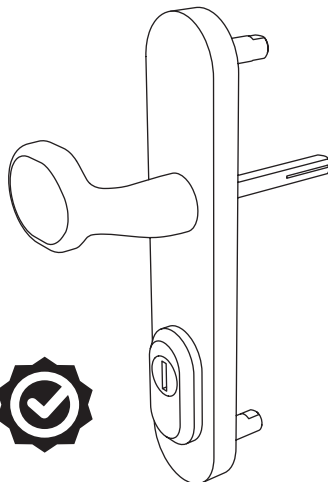
Insert the washers under the nut with the rotating spindle in the specified order.

7



Screw the nut with the rotating spindle through the outer plate into the pull handle and tighten firmly.

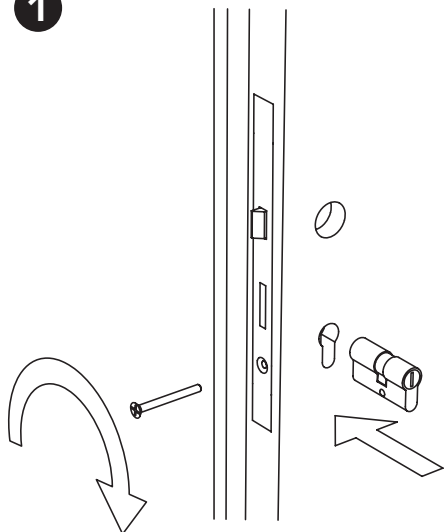
8



The fitting is now ready for door installation.

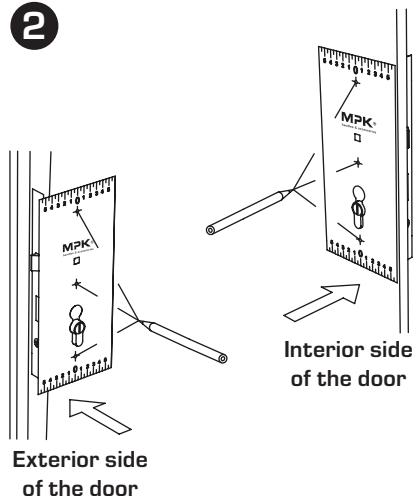
DRILLING HOLES FOR INSTALLATION

1



Insert the cylinder lock with the extended key into the lock opening and secure it with the retaining screw.

2

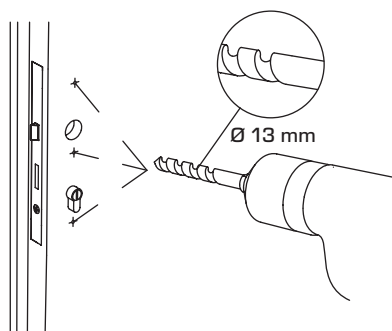


Place the drilling template onto the cylinder, mark the holes, and pre-drill them using a small drill bit. Repeat the process on the other side of the door. Ensure the template is aligned straight and level.

3



ONLY DRILL HALFWAY THROUGH THE DOOR - NEVER DRILL ALL THE WAY THROUGH IN ONE GO!

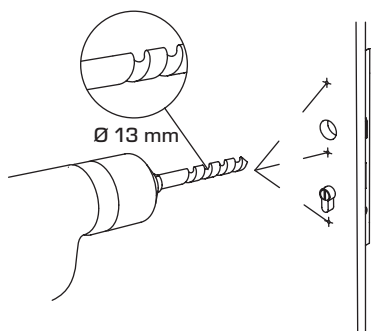


Drill the mounting holes on the exterior side of the door using a $\varnothing 13$ mm drill bit.

4



ONLY DRILL HALFWAY THROUGH THE DOOR - NEVER DRILL ALL THE WAY THROUGH IN ONE GO!

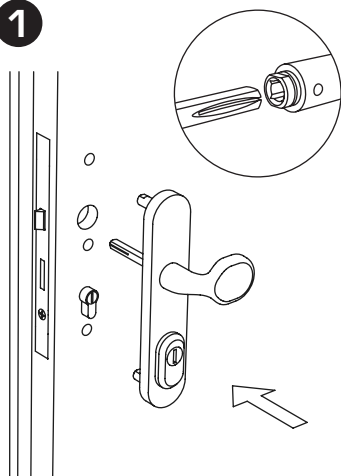


Drill the mounting holes on the interior side of the door using a $\varnothing 13$ mm drill bit.

FOR PROPER FUNCTIONALITY, ENSURE DRILLING IS PRECISE AND PERPENDICULAR!

INSTALLING THE FITTING INTO THE DOOR

1

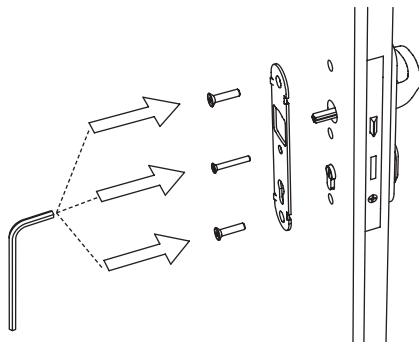


Insert the exterior part of the fitting with the pre-installed pull handle into the drilled holes. Make sure the spindle with the notch for the set screw is facing the direction of the lever handle opening.

2

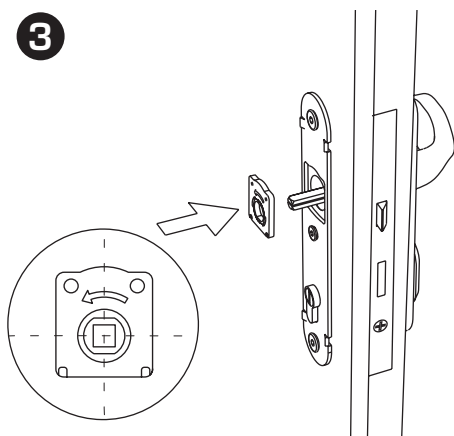
i

The SECURO S01 PLUS, S02 PLUS, and S03 PLUS fitting is certified to Security Class 4 (EN 1906) even when using just two mounting screws. For an even higher level of protection, we recommend using all three screws.



Attach the steel mounting base and secure it with screws. The spindle for the handle must be centered in the return mechanism opening.

3

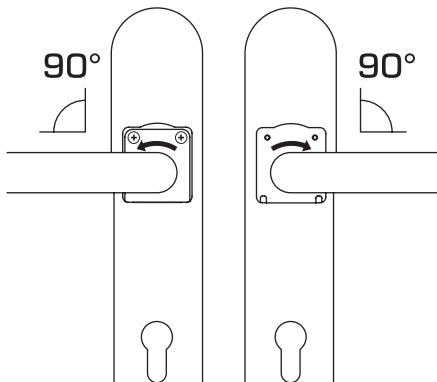


Insert the return mechanism into the mounting base opening at the handle position, with the arrow pointing in the direction the handle will move. We recommend first inserting the lower part of the mechanism, followed by the upper part. The handle spindle must be centered in the opening of the return mechanism.

4



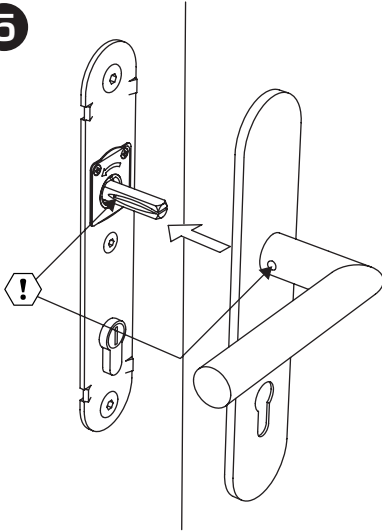
BEFORE MOUNTING, THE LEVER HANDLE MUST BE POSITIONED AT A 90° ANGLE TO THE FITTING. ONLY THEN CAN YOU CONTINUE WITH THE INSTALLATION.



The return mechanism must be rotated so that the arrow points in the direction the lever handle moves.

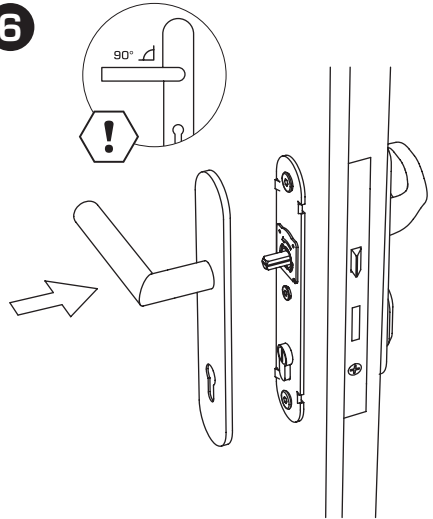
INSTALLING THE FITTING INTO THE DOOR

5



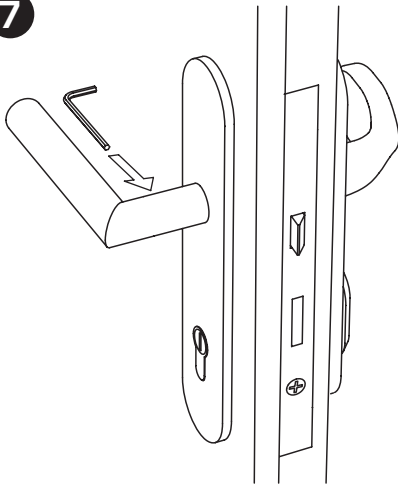
When installing the interior cover plate, ensure the spindle with the notch for the lever handle's set screw is facing the direction of the lever handle opening.

6



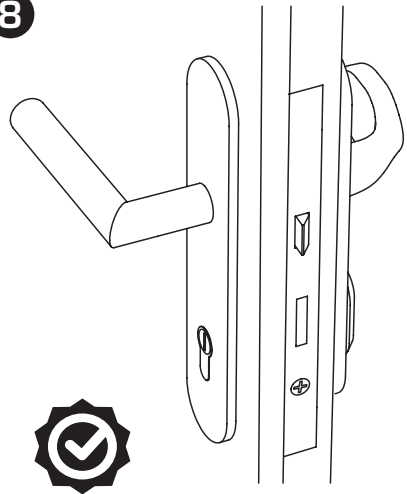
Mount the lever handle together with the interior cover plate onto the installed mounting base and return mechanism.

7



Using an allen key, tighten the set screw, which is pre-installed in the lever handle.

8



The fitting is now installed.

If the installation was done correctly, including accurate and perpendicular drilling, both the lever handle and the key lock should operate smoothly without any sticking or resistance.



Manufacturer:

MP KOVANIA s.r.o.

Nová Rožňavská 1 | 831 04 Bratislava

IČO: 45406804 | IČ DPH: SK2022968200